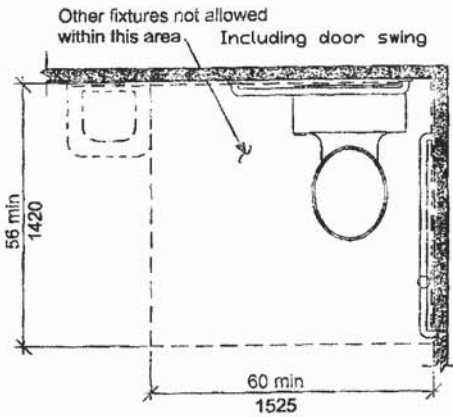


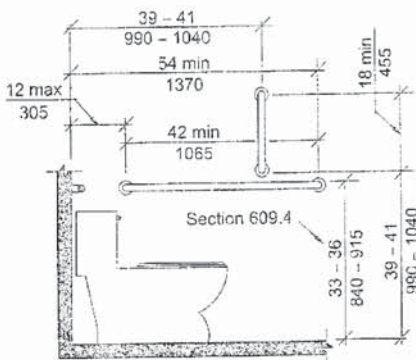
# ADA Restroom Requirements

## 604.3 Clearance.

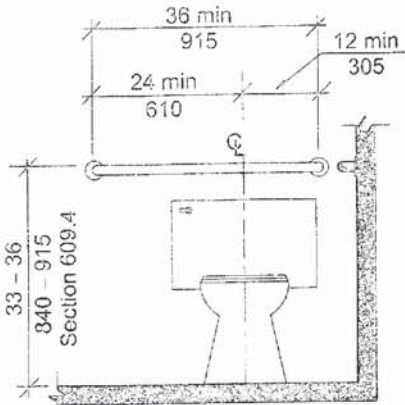


- Doorway shall have a 32" clear opening
- Restroom shall include a 5' diameter circle
- In most cases, minimum ADA restroom size shall be 7'x7'
- For a full set of requirements see ANSI 2003

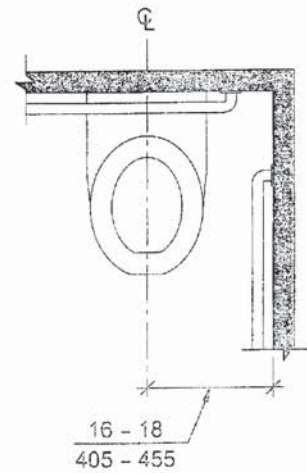
**Fig. 604.3**  
Size of Clearance for Water Closet



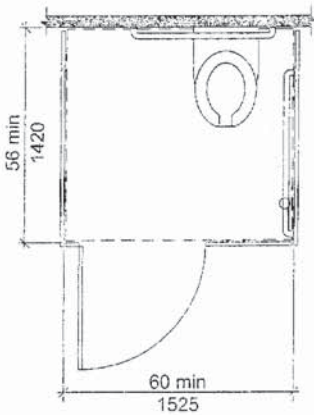
**Fig. 604.5.1**  
Side Wall Grab Bar for Water Closet



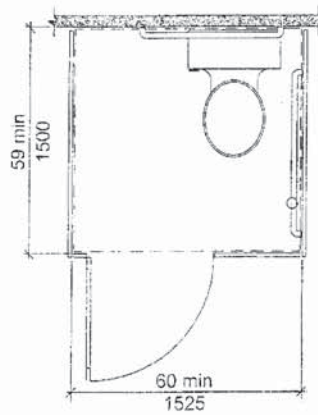
**Fig. 604.5.2**  
Rear Wall Grab Bar for Water Closet



(a) Accessible Water Closets

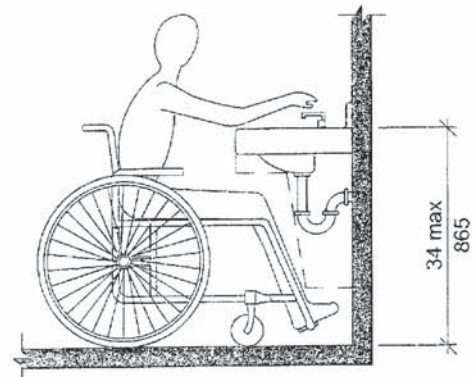


(a) Wall-Hung Water Closet - Adult



(b) Floor-mounted Water Closet - Adult  
Wall-Hung and  
Floor-mounted Water Closet - Children

**Fig. 604.5.2**  
Wheelchair Accessible Toilet Compartments



**Fig. 606.3**  
Height of Lavatories and Sinks