

CITY COUNCIL

Don E. Whitaker            Mayor  
Charles Beller  
Cleo L. Craig  
Larry Ferguson  
Don Glascock  
Roy B. Hooper  
Willie Hopkins, Jr.  
Whit Ozier  
Norma Roberts  
Max Seibold  
Wayne A. Smith

Larry C. Fountaine    City Manager

LIBRARY BOARD OF TRUSTEES

Dr. Charles Green    Chairman  
Willie Hopkins, Jr.  
Mrs. Calvin J. Landau  
Ernest Godlove  
Mrs. Rose Mary Newcombe  
John Jones

Charles R. Grasmick   Librarian

LAWTON PUBLIC LIBRARY

HOURS

9:00 - 9:00 Mon. - Thur.

9:00 - 6:00 Fri.

~~10:00~~  
9:00 - 2:00 Sat.

LAWTON PUBLIC LIBRARY  
BRANCH # 2

38th. & Cherry  
353-3122

LAWTON PUBLIC LIBRARY  
BRANCH # 3

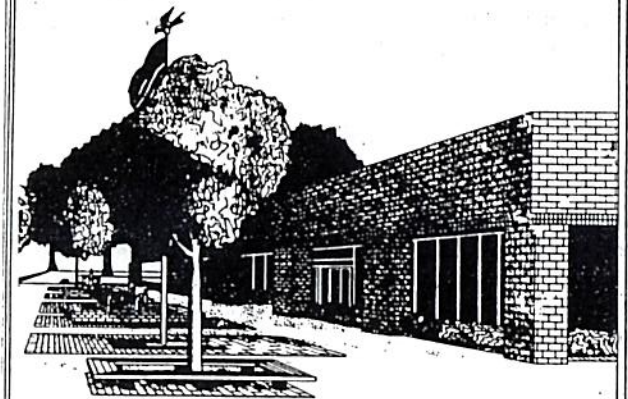
Multi-Purpose Building  
357-6100  
Ext.-297

HOURS

2:00 - 6:00 Mon. - Fri.

10:00 - 2:00 Sat.

WELCOME  
to  
LAWTON  
PUBLIC LIBRARY



110 S.W. 4th Street  
(entrance off 4th)  
Telephone 357-6100  
Ext. 268 - 269  
or  
248-6287

YOU MUST BRING YOUR LIBRARY CARD EVERYTIME

### HISTORY

A public library opened in Lawton on October 6, 1904. This was used until the Carnegie Public Library opened on June 12, 1922. It was built with a \$20,000 Carnegie gift and \$7,500 in local funds.

On October 19, 1971 the citizens of Lawton passed a bond issue to build a new library and to improve the library materials collection. The method of payment for this bond was a 1 cent sales tax which started on January 1, 1972. The McMahon Foundation provided a \$122,655 land site for the new library.

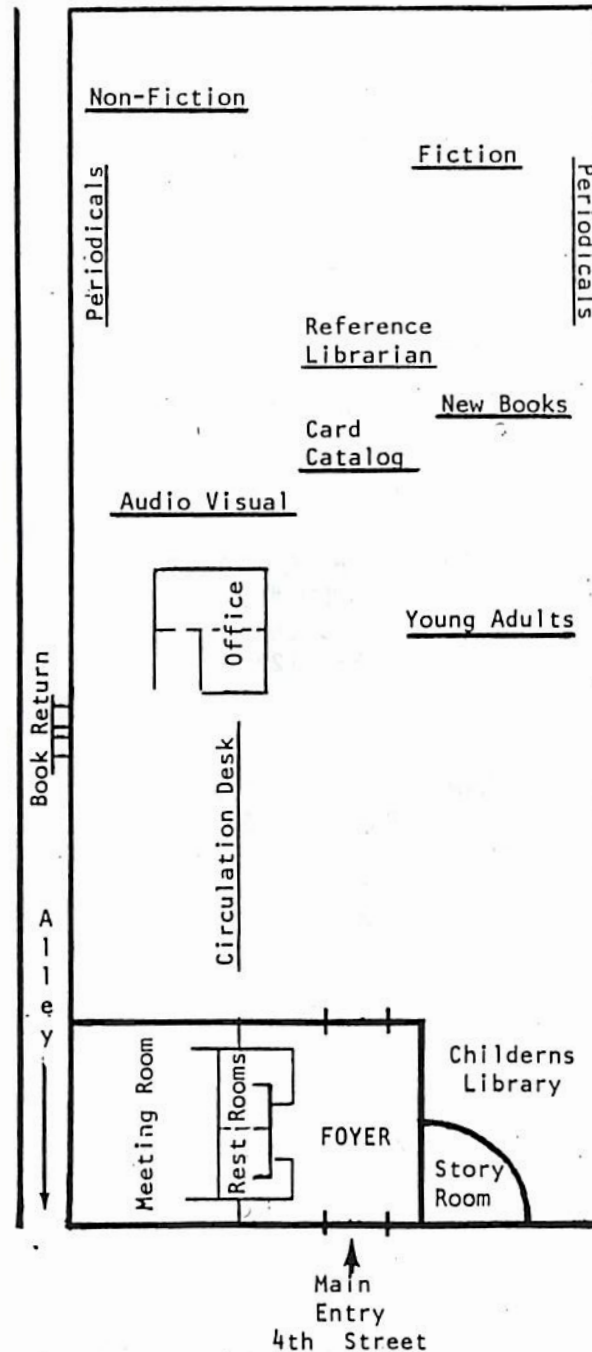
The Carnegie Public Library closed November 30, 1973. The Lawton Public Library opened for service December 17, 1973. This building won the McMahon Foundation Design Award in 1973.

### INFORMATION

If you live in Lawton, Comanche County, or Fort Sill you may obtain a borrower's card at the circulation desk or at any branch or bookmobile. This card may be used at any of these libraries and must be presented in order to check out materials.

To obtain a card, you need only identification, your signature and present address. Until a youth is over 13 years old, he must have his parent's signature on his application.

Smoking is permitted in the entry area only. No food of any kind is permitted in the library.



### LOAN PERIOD

- 1 week - magazines, pamphlets
- 4 weeks - most books
- 6 weeks - framed art reproductions

### FINES PER ITEM

- 1-4 days overdue grace
- 5-9 days 25 cents
- 10-14 days 50 cents
- 15-19 days 75 cents
- 20 or more \$2.00

SORRY NO RENEWALS

NO RESERVES ARE ACCEPTED  
BY TELEPHONE